

Best Practice Pilot

“Reduce up to 99%* of manual interventions”

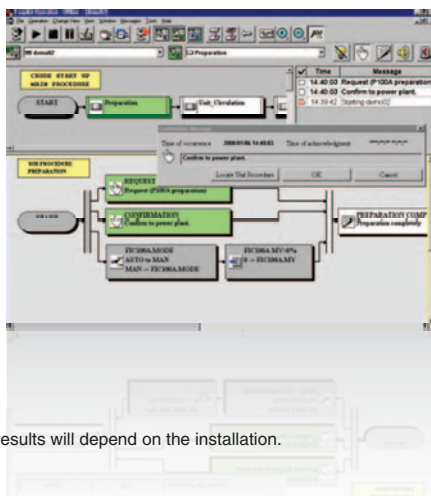
Why is best practice pilot important?

Standardization and automation of procedural operations based on the best practices of experienced operators realizes safer operation and improved profitability. In addition to a tool that allows skillful operators to directly implement their knowledge into a control system, an implementation methodology is essential. Yokogawa provides Best Practice Pilot as the implementation methodology together with a consulting service. This ensures consistent and optimum plant operations and guarantees skill transfer to the next generation of operators.



What are the advantages?

Yokogawa provides an all-encompassing consulting service for the capture, standardization, and automation of procedural operations. Our consultancy is based on a long and diverse track record in many industries and processes. In 2000, Yokogawa introduced Exapilot, the world's first automated procedural control solution, and this is now installed in over 1,000 plants around the world. This combination of consultancy skills and world leading applications provides the optimum solution to integrating procedural control, operator actions, and the control system into a unified environment for a best practice plant operation.



* Actual results will depend on the installation.

Bulletin 43C02G06-01E

www.yokogawa.com

Best Practice Pilot

DMAIC

Yokogawa's best practice pilot service is based on standardized Six Sigma DMAIC methodology. This provides clear and effective steps to achieve a defined target while ensuring consistent and high levels of service quality.

Define <small>step 1</small>	Measure <small>step 2</small>	Analyze <small>step 3</small>	Improve <small>step 4</small>	Control <small>step 5</small>
<ul style="list-style-type: none"> Select target operation Decide purpose of standardization or automation <ul style="list-style-type: none"> e.g. - Shortening of operation time - Reduction of transitional products - Reduction of operator manpower - Knowledge inheritance Set quantitative target (as needed) Establish a task force that includes the following: <ul style="list-style-type: none"> - Skilled operator - Process engineer - Instrumentation engineer - Maintenance engineer - Vendor consultant 	<ul style="list-style-type: none"> Learn best practices from skilled operators and temporarily enter them into Exapilot Acquire necessary information <ul style="list-style-type: none"> e.g. - SOP - P&ID - I/O list - A&E logs (where possible) - Historical trends (as needed) 	<ul style="list-style-type: none"> With team members, assess and standardize best practices entered in Exapilot Design and build stylized operation templates in Exapilot Consider automation of relevant field instruments Identify DCS application to which Exapilot application is relevant, and decide on modifications to insure the smooth functioning of Exapilot and DCS applications. 	<ul style="list-style-type: none"> Incorporate best practice in Exapilot within two weeks Modify DCS application (where possible) Automate relevant field instruments (where possible) Debug Exapilot application offline 	<ul style="list-style-type: none"> Evaluate improvement effect Report on results of service

*1 DCS engineering work will be proposed as required.

*2 Exapilot installation is a prerequisite for this service. This service is provided by executing the above five steps of the DMAIC cycle.

vigilantplant.®

The clear path to operational excellence

SEE
CLEARLY

KNOW
IN ADVANCE

ACT
WITH AGILITY

VigilantPlant is Yokogawa's automation concept for safe, reliable, and profitable plant operations. VigilantPlant aims to enable an ongoing state of Operational Excellence where plant personnel are watchful and attentive, well-informed, and ready to take actions that optimize plant and business performance.

YOKOGAWA ELECTRIC CORPORATION

World Headquarters
9-32, Nakacho 2-chome, Musashino-shi, Tokyo 180-8750, Japan
<http://www.yokogawa.com/>

YOKOGAWA CORPORATION OF AMERICA

2 Dart Road, Newnan, Georgia 30265, USA
<http://www.yokogawa.com/us/>

YOKOGAWA EUROPE B.V.

Databankweg 20, 3821 AL Amersfoort, The Netherlands
<http://www.yokogawa.com/eu/>

YOKOGAWA ENGINEERING ASIA PTE. LTD.

5 Bedok South Road, Singapore 469270, Singapore
<http://www.yokogawa.com/sg/>

YOKOGAWA CHINA CO., LTD.

3F Tower D Cartelo Crocodile Building
No. 568 West Tianshan Road, Shanghai 200335, China
<http://www.yokogawa.com/cn/>

YOKOGAWA MIDDLE EAST B.S.C.(c)

P.O. Box 10070, Manama
Building 577, Road 2516, Busaiteen 225, Muharraq, Bahrain
<http://www.yokogawa.com/bh/>

Trademarks

All brand or product names of Yokogawa Electric Corporation in this bulletin are trademarks or registered trademarks of Yokogawa Electric Corporation. All other company brand or product names in this bulletin are trademarks or registered trademarks of their respective holders.

Represented by: