

# General Specifications

## IPPAT Plus PatrolMate



GS43D02S30-01S

### ■ GENERAL

*IPPAT Plus PatrolMate is web-based application software which helps to create a patrol inspection database via a handy terminal. Patrol information collected is transferred to host computer and report making becomes simplified and easy to generate. Patrol information that is collected and stored in the host computer can be trended and retrieved for analysis purpose. IPPAT Plus PatrolMate will be useful and beneficial to improve daily / periodic / overhaul site operation and maintenance inspection work's process, checklists / reports and effective utilization of manpower resources.*

### ■ FUNCTIONAL SPECIFICATIONS

The full PatrolMate System comprises Yokogawa Proprietary IPPAT Plus PatrolMate Software and RFID Tag Reader, 3<sup>rd</sup> Party Handy Terminal (PDA), Server Computer (PC) and Sync Client Computer (PC).

- Server Computer

The Engineering configuration of the patrol and report template as well as storing and analysis of collected data is carried out on the Server computer.

- Browse Client Computer

Data analysis is carried out on the Browse Client Computer via the Internet Explorer.

- Sync Client Computer

Synchronizes the data collected from Handy Terminal to Server Computer.

- Handy Terminal

Patrolling and data collection is carried out using Handy Terminal. Data collected is then downloaded to the Sync Client computer and transferred to Server for data storage and management.

- RFID Tag Reader

Use of RFID Tag reader enabled quick and accurate identification of patrolling point or groups of patrolling points. Powerful time stamping feature ensure that patrolling points are carried out and not omitted.

#### 1) Overview of Handy Terminal Functions

##### 1.1 Login

To ensure the quality and veracity of data is collected.

##### 1.2 Startup Screen

Allow Inspection course and shift to be selected prior to starting of the patrolling route.

##### 1.3 Inspection List Screen

Display List of Inspections points and allow conditions of inspection points to be checked

##### 1.4 Inspection Point Screen

Allow detail of inspection points to be entered.

Also displays the standard value, upper limit and lower limit of inspection point. Trend of past eight readings can be viewed

##### 1.5 Abnormal Input Screen

When abnormality of reading of inspection point is detected, allows comment to be input.

##### 1.6 Memo Input Screen

Allow hand-written memo or drawings to be recorded by inspector to describe abnormality situation in detail.

##### 1.7 Specifications Screen

Allow inspector to view the equipment specifications related to a specific inspection point.

##### 1.8 Repair Function

This function facilitates users to view the information on equipments that are currently under repair whilst they are doing their inspection rounds.

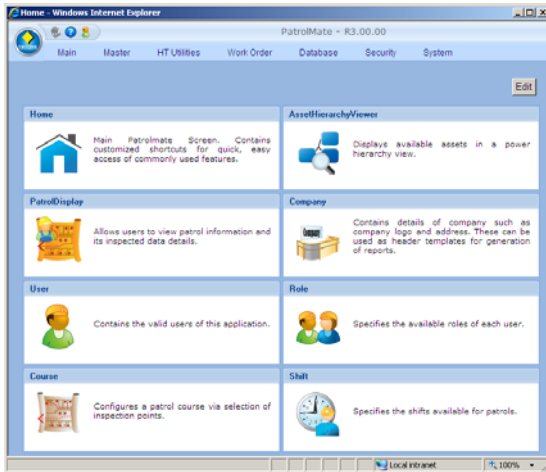
##### 1.9 Attach Image

Allow inspector to have an image of the respective equipments.

#### 2) Overview of Server Functions

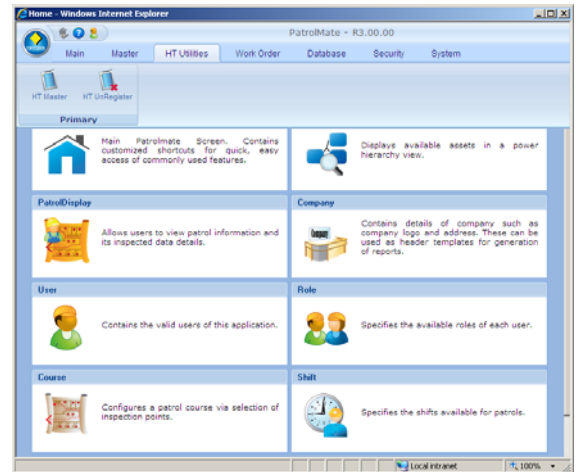
##### 2.1 Main

Users shall be able to access PatrolMate system via the Internet Explorer. Various functions are available in the Server Computer to facilitate the various different users to check and approved inspected data, view and analyze inspected records as well as generating standard and customized periodic reports of the collected information. The reports can range from one shift to one year depending on the customization of the template and the duration specified by the User.



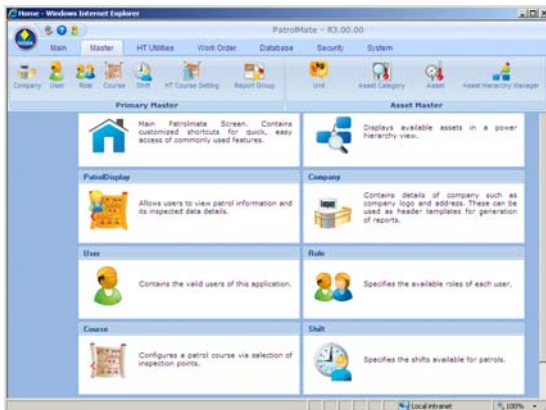
## 2.2 Master

This function is restricted to Users with Managerial rights only. It enables Users to maintain and edit the set-up of the database including functions to create, delete inspection points, locations, courses and assets.



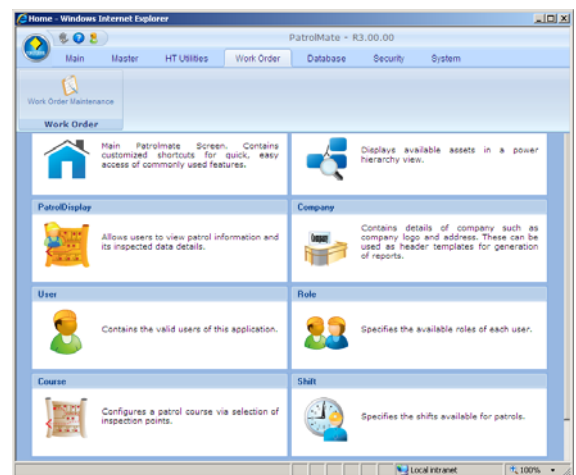
## 2.4 Work Order Function

The Work Order Function allows Users with Managerial rights to manage work orders raised when an item is tagged as "Under Repair". It allows them to approve, reject, edit and print the work orders as and when required.



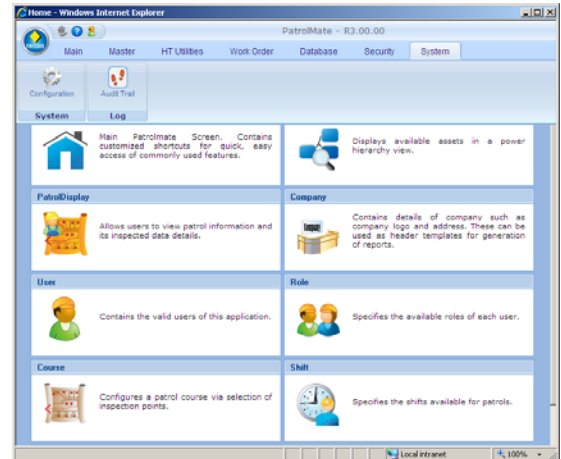
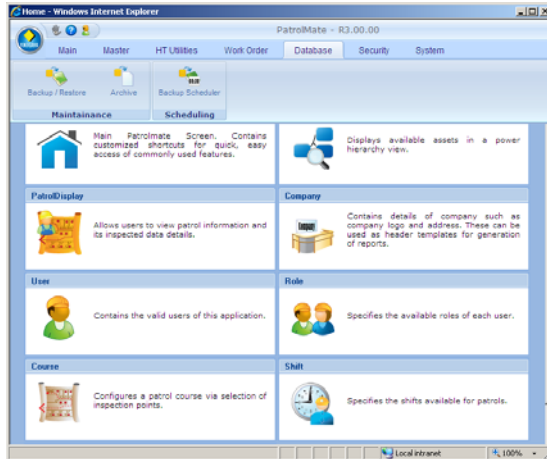
## 2.3 HT Utilities

The HT utilities Function allows user to register and un-register the Handy Terminal in order to transfer information to Server and Handy Terminal and vice versa.



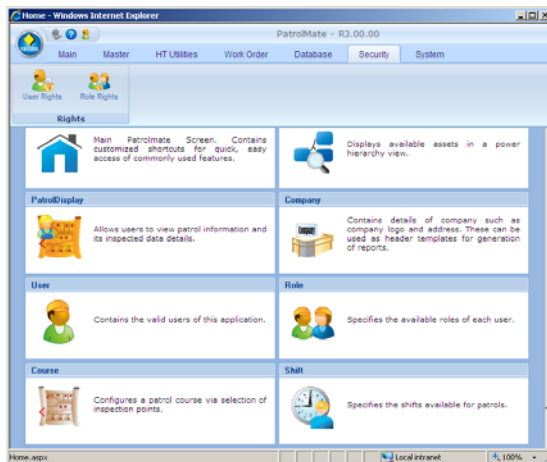
## 2.5 Database

The Database Function enables all Users with Managerial Rights to perform Backup, Restore and Archive.



## 2.6 Security

The Security Function is restricted to Managerial users allowing them to assign the right access to the respective users.



## 2.7 System

The Configuration Function enables all Users with Managerial Rights to change the settings of both the PatrolMate System on the Host Computer and on the Handy terminal. The setting features include the destination of Excel Reports templates created and the location of the stamp and log files are also set here. The Audit trail records events that are related to the changes made on the PatrolMate database.

## ■ SUPPORTED PLATFORMS

### Hardware Specifications

Category	Item	Specifications	Remarks
Host PC	CPU	Intel Pentium IV 1GHz or higher	P4 2.8GHz or higher is recommended
	HDD free space	160GB or more	40GB or more is recommended
	Memory	2GB or more	4GB is recommended
	Display resolution	1024 x 768 or more	
	Others	To be equipped with interface for connecting of CD-ROM drive and USB/serial etc. to the Handy Terminals	
Handy Terminal	CPU	XScale PXA255; with the clock to be 400MHz or more	
	Memory	32MB or more (minimum empty space of 2MB or more)	64MB or more is recommended
	Screen display resolution	240 x 320	

### PDA Specifications

		i.ROC 62* -Ex
CPU		Intel® XScale™-technology-based 400 MHz processor
Operating System		Microsoft Windows Mobile 5.0 software for Pocket PC - Premium Edition
Memory	RAM	RAM 64 MB SDRAM
Display	Type	TFT colour display
	Resolution	Resolution: (W x H) 240 x 320 pixels
	Backlight	LED
Environment	Operating temperature	i.roc 62* -Ex: -10°C ..... +50°C
	Storage temperature	-10°C ..... +60°C
	Dust/Water-Splash proof	IP 65 (immersion for brief periods)
	Drop durability	1 m onto concrete
Dimensions and weight	Dimensions	L x W x D: 175 x 88 x 49 mm
		max. 215 x 88 x 49 mm
	Weight	i.roc 62* -Ex: approx. 825 grams
Housing:		Anti-static, non-corroding housing
Ex-Proof Rating		II 2G EEx ia IIC T4

## ■ OPERATING ENVIRONMENT

Category	Item	Specifications
Server PC	OS	Microsoft XP SP2 Microsoft Server 2003 SP2 Standard Microsoft Vista Microsoft Server 2008 SP1 Standard
	Communication	Microsoft ActiveSync 4.5
	Office	Microsoft Excel Version 2007
Handy Terminal	OS	Windows Mobile 2003 or 5.0